

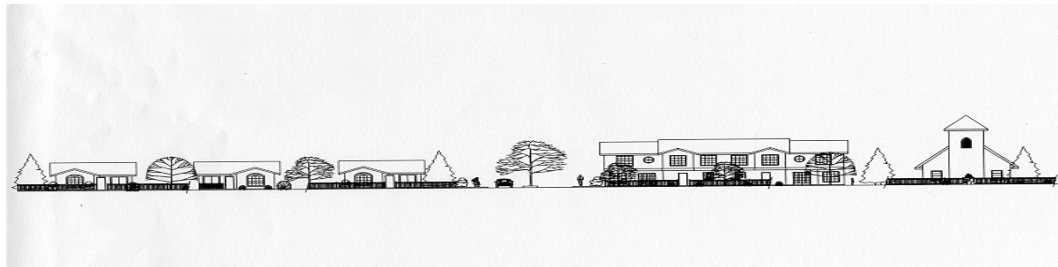
Develop the City/Agency-owned Linden Avenue site with a use that is an asset to the neighborhood.

Action Steps

- Determine range of potential uses for subject site. Current zoning and general plan designations include multi-family residential with a commercial strip fronting Railroad Avenue. (RRA, RHD)
- Evaluate site characteristics and conduct constraint analysis. (RRA, RHD)
- Provide neighborhood residents and property owners an opportunity for comment regarding new development. (RRA, RHD, OWN, RES)
- Identify funding sources for preferred development. (RRA, RHD)
- Enter into development agreement with developer for development of the property. (RRA, RHD, DVP)



Linden Ave. site, looking east.



Looking east, potential housing development elevations along West Street at Linden Avenue.