



We love our reader's ideas and suggestions so keep 'em coming! Did you make a New Year's resolution to reduce waste, to consume less, or to conserve water or energy?

Please send us your ideas via email at tsgroup@ci.redding.ca.us. If we can use your idea, you may see it published in a future edition of the Waste Stream!

Check Us Out Online

You can find important information on our website. The website is regularly updated with information about our special programs, fees, schedules and events. If you haven't visited our website lately, why not take a look?

www.ci.redding.ca.us/solwaste

Got Leaves?

Redding residents can bring excess leaves to the Transfer Station on Abernathy lane for free disposal until January 31st. You must bring a current City of Redding Solid Waste Utility bill and a photo I.D. Leaves will go to the compost facility so they'll need to be removed from the bags at the compost site.

No Hot Ashes in Containers!

There's no quicker way to ruin the holidays than to start a fire because of improperly disposed ashes and coals. NEVER put hot ashes in your garbage can. They should be thoroughly cooled, soaked with water for 4 to 5 days, and bagged (to prevent them from blowing around and getting in your eyes.)

Need more info.?



City of Redding
Solid Waste Utility
2255 Abernathy Ln.
P.O. Box 496071
Redding CA 96049-6071

Office Hours: M-F, 8am to 4:30pm

Transfer Station: M-Sat, 8am. to 4:30pm

Customer Service 224-6201

Household Hazardous Waste 224-6209

Holiday Schedule

Thanksgiving: November 22nd & 23rd

Thurs & Fri. routes one day late

Christmas: Dec. 25th

Tues. - Fri. routes one day late this week

New Year's Day: Jan. 1st

Tues - Fri. routes one day late this week

Recycle Your Christmas Tree

The City of Redding offers three convenient options for recycling your old Christmas Tree: cut it into segments that fit loosely in your green waste cart; cut it into 4' lengths and set it at the curb on your collection day; or bring it to the Compost Facility which is located at the Transfer Station on Abernathy Lane.



Remember that all tinsel, decorations, lights and stands must be removed prior to recycling. Flocked trees can not be processed as compost. They must be landfilled and will be charged as garbage.

If you choose to bring your tree to the City's Transfer Station, please bring a current City of Redding Solid Waste Utility bill and a photo I.D. The Transfer Station is open from 8:00 am to 4:30 pm Monday through Saturday. The free Christmas tree recycling program is available from December 26th through January 31st each year.

Looking For Ways to Reduce Waste This Holiday Season?

No doubt, we generate more waste during the holidays than at any other time of the year. Locally, Redding's Solid Waste Utility sees increases of more than 110% annually when the months of November, December, and January are compared to the rest of the year. Redding's Recycling tonnage peaked at a record high of 841 tons set in the month of December, 2005. Typically, Redding processes an average of 660 tons per month of curbside Recycling throughout the rest of the year at the Material Recovery Facility.

The amount of waste generated during the holidays is staggering. Consider all of the excess packaging, packing waste (foam peanuts and packing paper), gift wrap, greeting cards and food waste that your family generates. Now multiply that by 33,950 households (according to Redding GIS Manager, Jim Coats). Fortunately, a lot of the recyclable materials get routed to the Recycling program where they can be put to further use. But how about just creating less waste in the first place? After all, the 3 R's start with 'Reduce.' So, in the spirit of holiday reduction, here are a few tips to get you started.

1. Give Less. This doesn't mean you should leave out Aunt Betty or Cousin Jeff. What it does mean is to think of your gift giving in non-material ways. Spending time with a loved one is the best way of all to show you care.

2. Think before you buy. Does Uncle Ralph really need another tie? You know he doesn't wear the previous sixteen you've given him. Perhaps he'd prefer it if you mowed his lawn or took his truck for an oil change (at a Certified Used Oil Collection Center, of course) instead.

4. Gift cards are a great alternative. Everyone appreciates the gift that gives the freedom of choice (especially teenagers!)

5. Use duplicate photos as gift tags or postcards. Rather than throw out your duplicates, turn them over, write your 'to' and 'from' messages and attach them to your package. You can also send them through the mail as a creative postcard.

6. Look for gifts made with recycled content. Eco-friendly gifts are easier than ever to find. Green purchasing is 'in'. Consult websites such as www.greengiftguide.com, which is a site that compiles various vendors of eco-friendly gifts, home decor, jewelry, furnishings and clothing.

7. Volunteer your time. Ask your friends and family if you can spend time helping out their favorite charity or organization. No one can resist this gift idea!



City's Free Household Hazardous Waste Program Attracts Record Numbers!

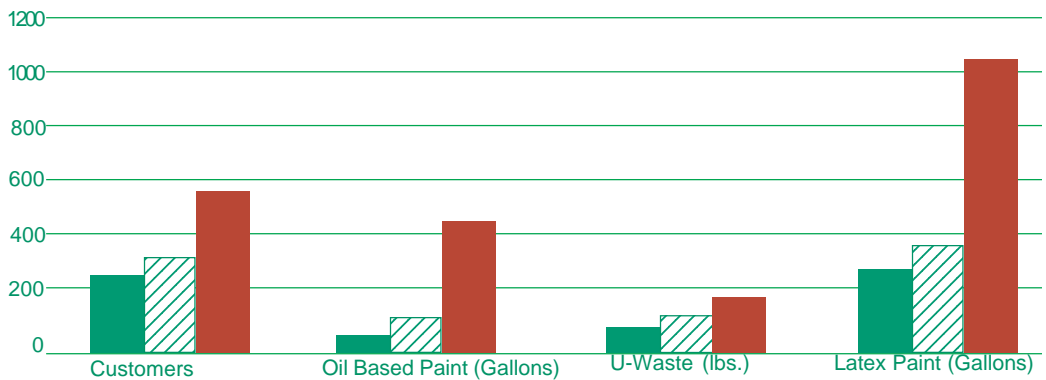
Redding's Household Hazardous Waste (HHW) Staff has been especially busy since September 1st. That was the date the City's new free HHW disposal program went into effect. The City Council recently voted to eliminate the gate fees for household hazardous waste disposal at the City's HHW facility on Abernathy Lane.

Previously, customers paid a reduced disposal fee *at the time of disposal*. However, recognizing that this fee could be a disincentive to proper disposal, the Council voted to eliminate the gate fees.

Of course, the proper management of hazardous waste is costly. City rate payers and customers using the R.W. Curry West Central Landfill help fund this program through solid waste charges and tipping fees.

The month of September has been a record-breaker at the HHW facility. As shown in the chart to the right, the customer count increased by 122%, Oil-Based Paint increased by 362%; Universal Waste increased by 81%; and the amount of latex paint increased by 258%! The totals are compared to July and August of 2007 and are represented in pounds for Universal (U-Waste), gallons for paint, and customers are counted individually.

■ July
 ▨ Aug
 ■ Sept



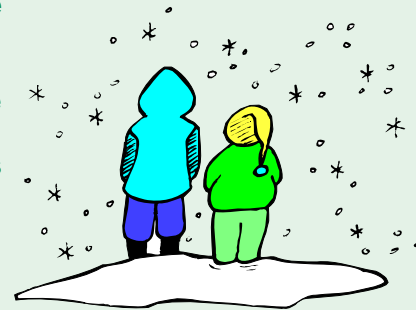
6th Annual Coats for Kids' Drive: Through December 14th, 2007

The City of Redding Solid Waste Utility and the Redding Fire Department are proud to once again sponsor the Annual Coats for Kids program. This is our sixth year to work with the Good News Rescue Mission to provide warm winter coats for the children of Shasta County. Each year, nearly 1,000 coats are collected from Redding's generous residents and delivered to the Rescue Mission.

If you'd like to participate, you can simply place your donation in a securely closed plastic bag labeled 'Coats for Kids' and place it on top of your blue recycling cart. Your driver will pick it up on collection day. **There are also convenient drop-off locations at each City of Redding Fire Station and in the lobby of City Hall.**

Pastor Jim Dahl, Director of the Good News Rescue Mission stressed that childrens sizes, in particular, are needed. He added that canned food donations are always needed at this time of year, as well.

The staff of the Solid Waste Utility and the Redding Fire Department invite everyone to share the warmth this holiday season: donate to Coats for Kids.



Household Hazardous Waste, Continued...

Clip & Save Solid Waste Utility Holiday Schedule - 2008

The following holidays will have garbage, recycling and yard waste collection as follows:

New Year's Day - Jan. 1, 2008
 Tues - Friday routes ONE day late.

Independence Day - July 4, 2008
 Fri routes ONE day late

Martin L. King Jr. - Jan. 21, 2008
 All routes ONE day late.

Labor Day - September 1, 2008
 All routes ONE day late.

Lincoln's Birthday - Feb. 12, 2008
 No change.

Columbus Day - October 13, 2008
 NO CHANGE

President's Day - Feb. 18, 2008
 All routes ONE day late.

Veteran's Day - November 11, 2008
 NO CHANGE

Memorial Day - May 26, 2008
 All routes ONE day late.

Thanksgiving Day - Nov. 27, 2008
 Thurs/Fri routes ONE day late

Christmas Day - Dec. 25, 2008 Thurs/Fri routes ONE day late.

The West Central Landfill & City of Redding Transfer Station will be **closed** on the following dates:

New Year's Day - Jan. 1, 2008

Martin Luther King Day - Jan 21, 2008

President's Day - Feb. 18, 2008

Memorial Day - May 26, 2008

Independence Day - July 4, 2008

Labor Day - September 1, 2008

Thanksgiving Day - Nov. 27, 2008

Christmas Eve - Dec. 24 (closed at noon)

Christmas Day - December 25, 2008